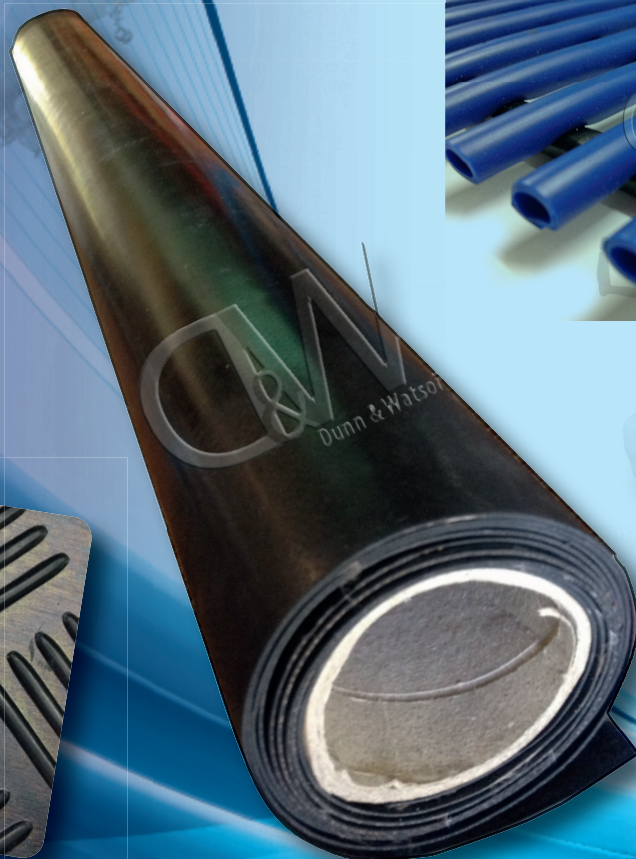


Section 10

MATTING

10 - MATTING



SHEET RUBBER

Product	Width (mm)	Length (Mtr)	Hardness (Shore A)	Nominal Specific	Tensile Strength	Max Temp
Natural Insertion	1200	10	58/68	1.27	6	70
Neoprene	1200	10	55/65	1.44	4	90
Nitrile	1200	10	60/70	1.21	16	90
EPDM	1200	10	60/70	1.20	7	110
Viton	1200	10	65/75	-	20	325

Natural Insertion:

Great general purpose product. Commonly used in trailers for matting, floor liner, anti slip for tools, etc.

Features:

- Made from quality natural rubber
- Reinforced ply for tear resistance
- Hard wearing and easy to clean
- UV Stabilized

Thicknesses Available:

Part No.

M0019	1.5mm
M0020	3.0mm
M0021	4.5mm
M0022	6.0mm
M0023	10.0mm



Neoprene:

Great general purpose product. Commonly used in trailers for matting, floor liner, anti slip for tools, etc. Neoprene rubber is specifically useful in outdoor application or around basic chemicals and oils.

Features:

- Made from quality ingredients.
- Oil and Heat resistance
- Hard wearing and easy to clean
- UV Stabilized

Thicknesses Available:

Part No.

M0024	1.5mm
M0025	3.0mm
M0026	4.5mm
M0027	6.0mm
M0028	10.0mm



Nitrile:

Nitrile sheet rubber is made from a high grade of synthetic rubber. The primary purpose of Nitrile rubber is for its great resistance to petroleum based oils, fuels and general hydrocarbons. Beyond this, Nitrile also offers excellent resistance to a wide range of chemicals

Features:

- Highly resistant to mineral oils, vegetable oils and many acids
- Made from quality material
- Hard wearing and easy to clean
- UV Stabilized

Thicknesses Available:

Part No.	
M0029	1.5mm
M0030	3.0mm
M0031	4.5mm
M0032	6.0mm
M0033	10.0mm

**EPDM:**

EPDM sheet rubber is made from a high grade of synthetic rubber. The primary purpose of EPDM rubber is for its great resistance to the ozone and high temperatures. Beyond this, EPDM also offers excellent resistance to a wide range of chemicals and acids. EPDM is also fantastic for water based environments and will not deteriorate when submerged.

Features:

- Highly resistant to the ozone and high temperatures.
- Resistance to a wide range of chemicals and acids.
- Made from quality material
- Hard wearing and easy to clean
- UV Stabilized

Thicknesses Available:

Part No.	
M0034	1.5mm
M0035	3.0mm
M0036	4.5mm
M0037	6.0mm
M0038	9.0mm



Viton:

Viton sheet rubber is made from a high grade of synthetic rubber made from 100% FKM Fluoroelastomer. The primary purpose of Viton rubber is for its great resistance to high temperatures and display excellent resistance to extremely aggressive fuels and corrosive chemicals. There are a variety of forms when it comes to Viton so please clearly explain your application before purchase so we can make sure you purchase the right matting for the job.

Features:

- Resistant to high temperatures.
- Resistance to a wide range of fuels, chemicals and acids.
- Made from quality material



Heavy Duty M0008 Ute Matting:

Like the name suggests this matting is great for tray liner applications.

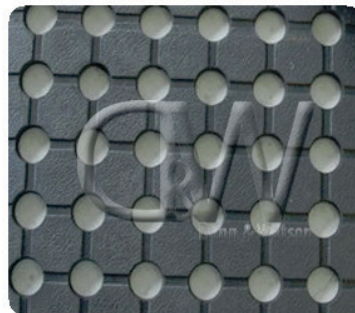
Features:

- Made from heavy duty rubber, hard wearing and easy to clean.
- Dimpled backing to allow air and water to circulate under the matt prevent water pooling and rusting.
- Made from quality material
- Anti slip walking surface due to holes throughout matt, preventing water pooling
- UV Stabilised
- Ideal for the back of vehicles such as ute trays, vans, trucks, etc Dimensions: 1830mm Wide x 10mm thick x 10 Meter Rolls

Technical Specifications

1. Tensile Strength / Mpa
2. Elongation @ Break%
3. Hardness (shore A)
4. Specific gravity

Value
5 Mpa
250%
70
1.40 / cm3



10 - MATTING

Big Rib:

Great for tray liners, floor coverings, ramps, steps, etc. Features:

- Heavy duty rubber, hard wearing and easy to clean.
- Soft to walk on.
- Made from quality material
- Matting is oil and spill resistant
- UV Stabilised

Dimensions: 1830mm Wide x
5mm thick x 10 Meter Rolls

Technical Specifications:

1. Tensile Strength / Mpa	5 Mpa
2. Elongation @ Break%	250%
3. Hardness (shore A)	70
4. Specific gravity	1.60 / cm ³
5. Heat Resistance	25 / 35
6. Compression	50

**STYLED RUBBER MATTING****3.5mm Thickness:**

A variety of matting profiles to suite many kinds of industrial and a agricultural applications.

Features:

- Heavy duty rubber, hard wearing and easy to clean.
- Soft to walk on.
- Made from quality material
- Matting is oil and spill resistant
- UV Stabilised

Dimensions: 1200mm Wide x
3.5mm thick x 10 Meter Rolls

Technical Specifications:

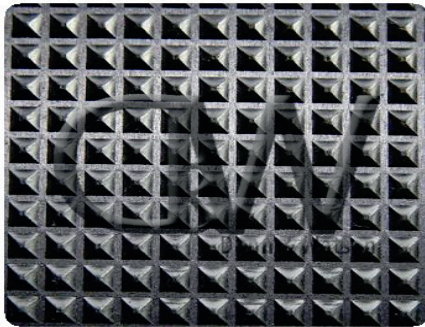
1. Tensile Strength / Mpa	5 Mpa
2. Elongation @ Break%	250%
3. Hardness (shore A)	70
4. Specific gravity	1.60 / cm ³
5. Heat Resistance	25 / 35
6. Compression	50

Checker Plate:

Fine Rib:



Pyramid:



Coin:



Equine Matting:

Cow Matting

- Matting is designed to be anti-slip from its dimpled surface.
- Commonly used on horse floats and live stock trailers
- Thick rope weave prevents matt from being torn or scuffed.
- Heavy duty rubber, hard wearing and easy to clean.
- Made from quality material
- Matting is oil and spill resistant
- UV Stabilised

Dimensions:

2000mm Wide x 8mm thick x 10 Meter Rolls
1700mm Wide x 8mm thick x 10 Meter Rolls



10 - MATTING

Tailgate Matting:

- Matting is designed to be anti-slip from its raised ribs.
- Commonly used on horse float tailgates and live stock trailers
- Heavy duty rubber, hard wearing and easy to clean.
- Made from quality material
- UV Stabilised

Dimensions: Supplied in sheets
1750mm Wide x 1550mm Tall.



PVC Matting:

Product — The matting is tubular extruded flexible PVC heat welded into a duckboard configuration to achieve a long lasting anti-fatigue, slip resistant capability for commercial, domestic, hospitality and industrial uses.

Product Details — The tubular wefts are a nominal 7.5mm diameter at nominal 36mm centres and the warps a nominal 7.2m cross section with nominal 5mm spacings.

Colours

- Wefts — Black (other colours subject to quotation & order quantity)
- Warps — Black, Blue, Brown (Dark), Gold, Green (Olive), Grey, Orange, Red (other colours subject to quotation)

Roll Dimensions — 910mm x 12mts (10.92 sq/mt), 3' x 39'3" (118.2 sq/ft), Mat edge height nominally 12.5mm (1/2")

Material Weight — Nominally 3.67 kg per lineal metre, 2.2 lbs per lineal foot

Shore Hardness — A63

Specific Gravity — 1.24

Tensile Strength — 139 kg/cm

100% Modulus Elongation — 53 kg/cm

Elongation — 410%

Tear Strength — 37 kg/cm

Temperature Effect — Flexible from minus 10C to 60C (14F to 212F)

Flammability — This material does not support combustion, being self extinguishing on removal of flame. Gases evolved on flame application are predominately HCl and CO

Cutting — Use shears or knife blade and straight edge

Joining

- Side to Side — Use proprietary SVP 'Side Saddles'
- End to End — Cut back warps so as to butt over weft joining 'Saddles'

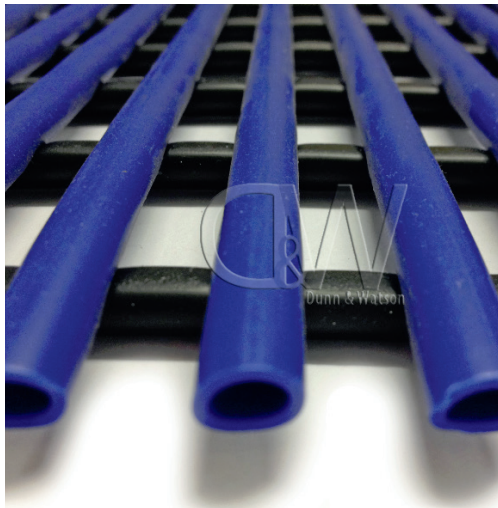
Edging — Use SVP 'Ramp Edging' and solvent adhesive

Applications:

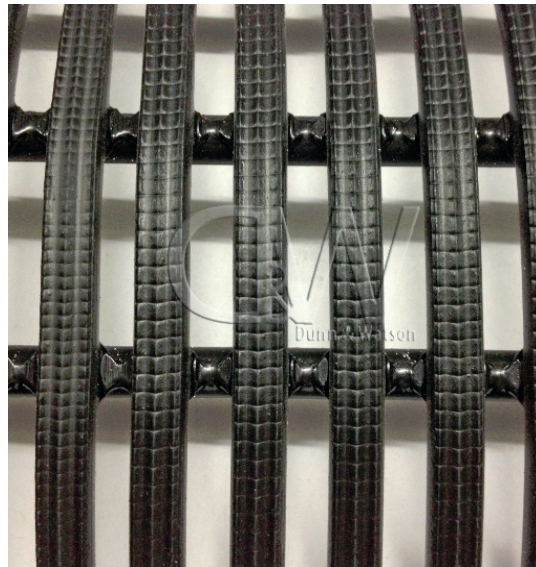
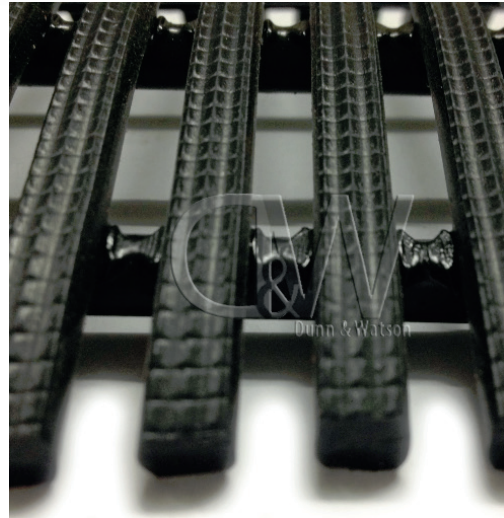
Bars, hotels, cafeterias, banks, post offices, play-grounds, supermarket check-outs, laundries, clubs, caravan parks, resorts, swimming pools, laboratories, locker rooms, toll collection and parking lot booths, health centres, latrines and abolution areas, beach facilities, boats, workshops, garages, cars and 4WDs, walkways, showers, saunas, schools, shops, power stations, hospitals, barracks etc. Use an off-cut to sit on at your favourite sporting event.

- Hollow tubes give an "air cushion" effect, resulting in a reduction in user fatigue.
- Tube Tread® insulates against cold, damp, noise and electricity.
- Easy to maintain — mostly, you can just hose it down and put it straight back!
- Tube Tread® is Supa-tough — the tubing is innovatively welded to cross-tubes, resulting in a space-age duckboard which has to be vandalized to tear it apart.
- It is Supa-resilient — fragile dropped items are less likely to break.
- Inhibits mould, bacteria and fungal growth.
- It is Supa-safe — at a height of only 12 mm above the floor, it is not a trip hazard.

Tube Tread:



Supa Grippa:



10 - MATTING

OUTDOOR CARPET MATTING:

Boot Liner:

Great for lining the floor of campers and trailers. You can also use this product to wrap drawer systems and vehicle fit outs.

Features:

- Velour face textures
 - Latex backing (rough)
 - Perfect mix of strength and flexibility to fold around corners
- Dimensions:
2000mm Wide x 40 Meters Long
(Supplied by the roll or cut to length)

Specifications:

Construction:	Needlepunch	Backing:	Gel
Face Fibre:	100% Polypropylene	Width:	2 M
Face Texture:	Velour	Roll Lengths:	30 L/M
UV Stabilised:	6000 hr UV	Colours:	Anthracite



Marine Carpet:

Great for lining boat trailer skids, flooring on boats, etc.

Features:

- UV Stabilised making the matting resistant to fading(rough)
- Perfect for outdoor applications
- Made from hard wearing polypropylene allowing resistance to water and wont rot in wet environments

Specifications:

Width:	2 M	Construction:	Needle-felt
Roll Length:	40 L/M	Backing Weight:	150 gr/m2 + 10%
Pile Height:	4mm + 10%	Pile Weight:	700 g/m2 + 10%
Pile Material:	100% Polypropylene	Total Weight:	850 g/m2 + 10%
Primary Backing:	Latex	Total Height:	7.5mm + 10%

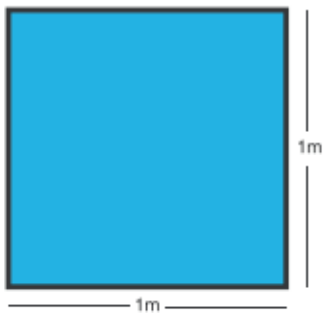


Gym Tiles:

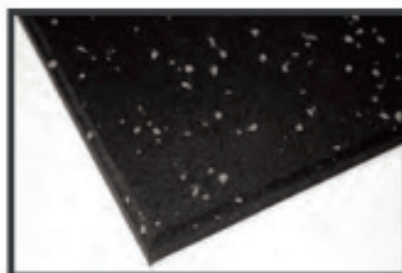
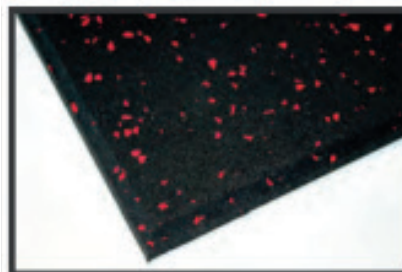
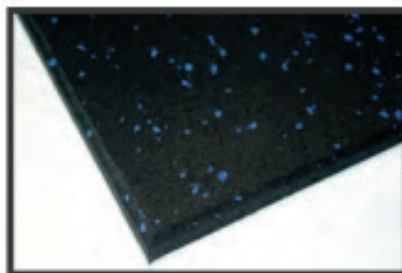
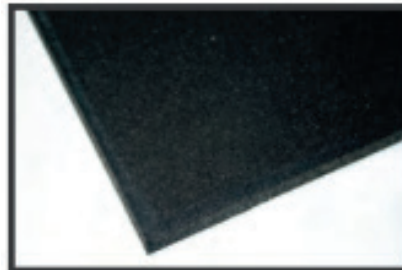
Great for gymnasiums, playgrounds, indoor sporting complexes, etc. Matting works great in wet or dry conditions.

Material	Polymerically bound recycled rubber and 6% EPDM
Density	760kg/m ³
Thickness	15mm
Dimensions	1m x 1m, bevelled edges
Wet Pendulum	Class X, slip resistance
Dry Pendulum	Class F, slip resistance
Tensile Strength	1.40 N/mm ²
Shore A Hardness	40
Fire Rating	CRF 3.1KW/m ² Mean
Smoke Value	100%
Tolerances	Dimensions - ± 5% Thickness - ± 1mm Density - ± 5%
VOC Emissions Certification Office Design IEQ-13 Office Interiors IEQ-11	Total Volatile Organic Compound emission rate 0.2mg/m ² /hr (24 hours)

top view



side view



10 - MATTING

10 - MATTING



10 - MATTING